

Henry2 DW1 LWD RT 200TVD

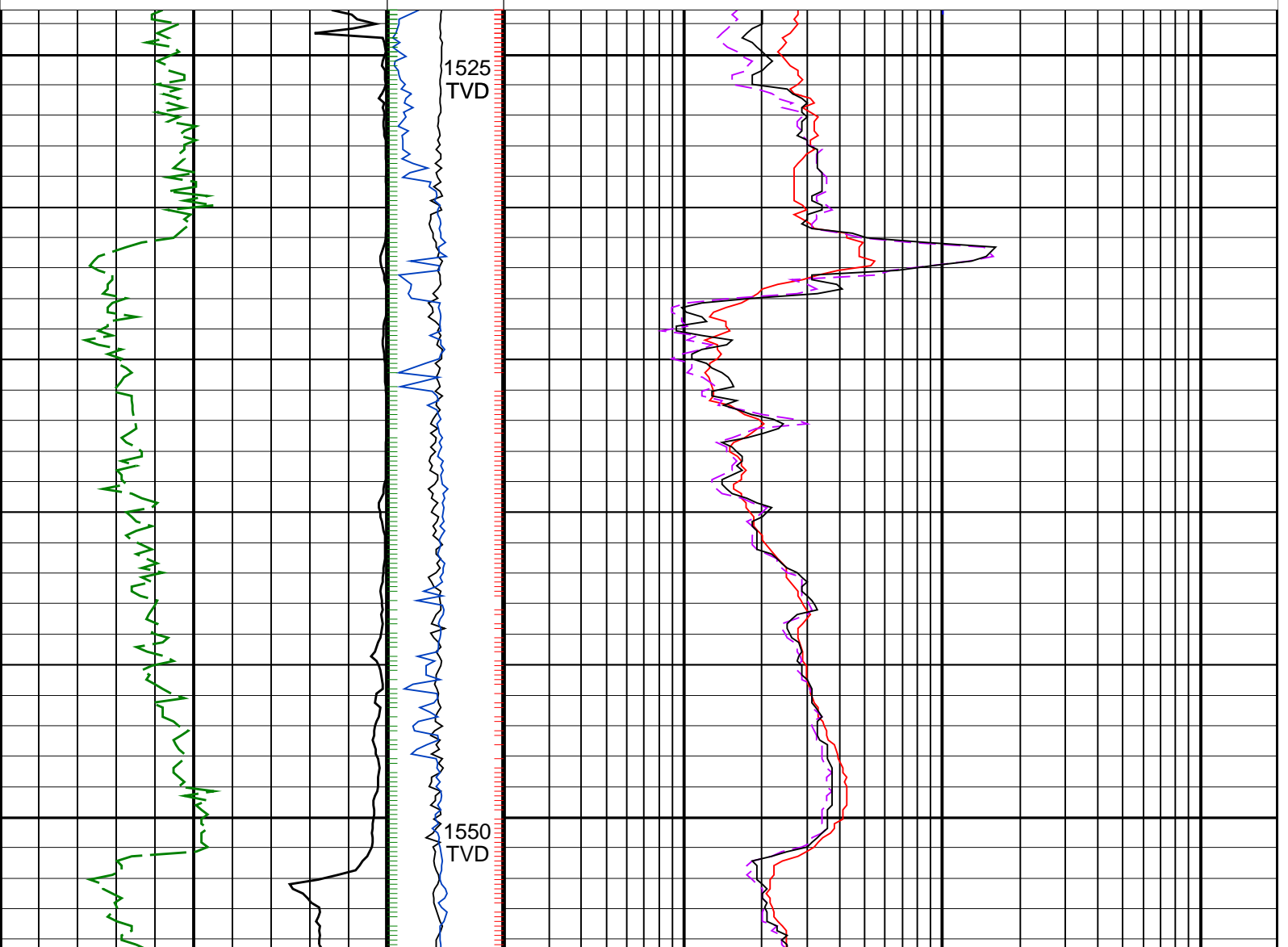
IDEAL Version: ID13_0C_11 <TVD> Vertical Scale: 1:200

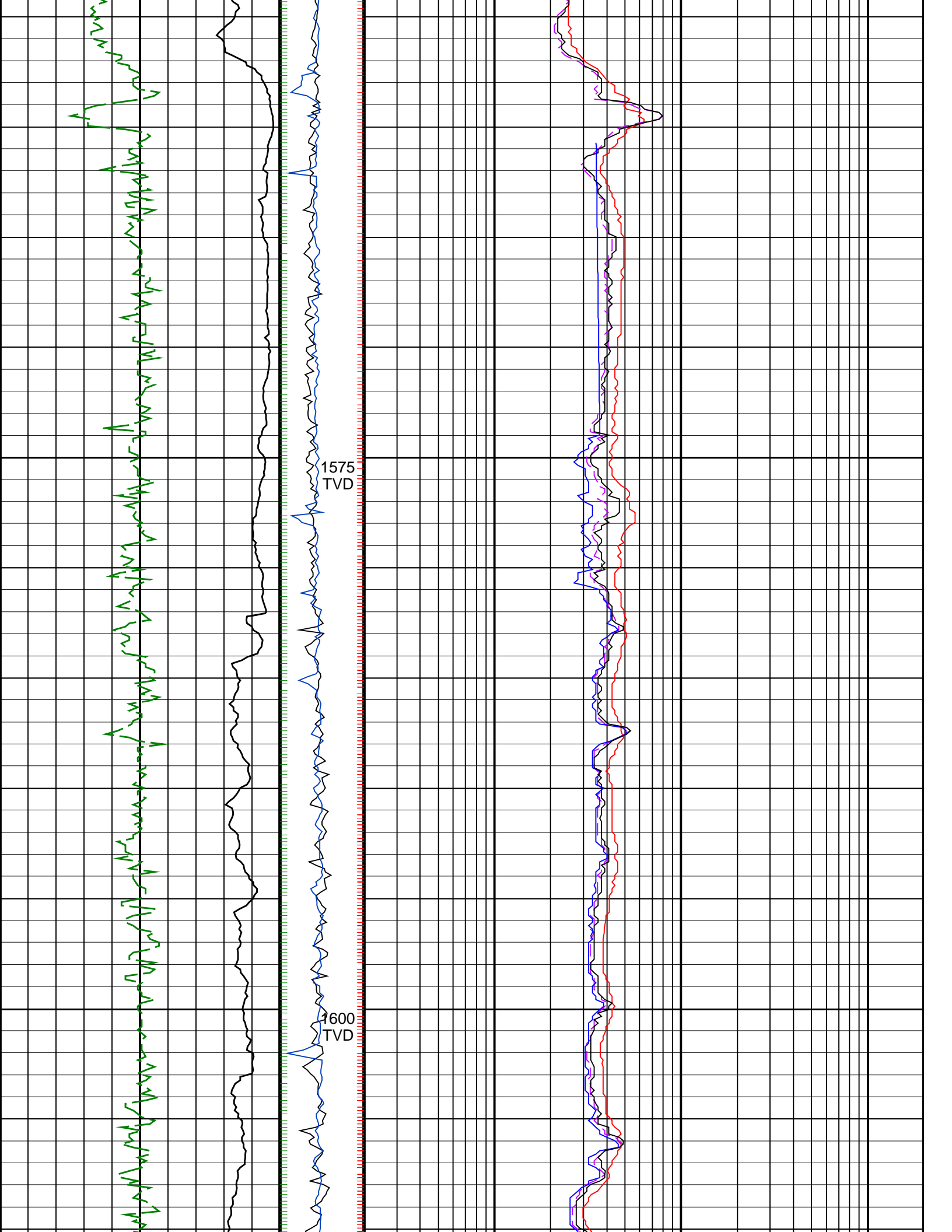
Graphics File Created: 18-Sep-2008 04:31

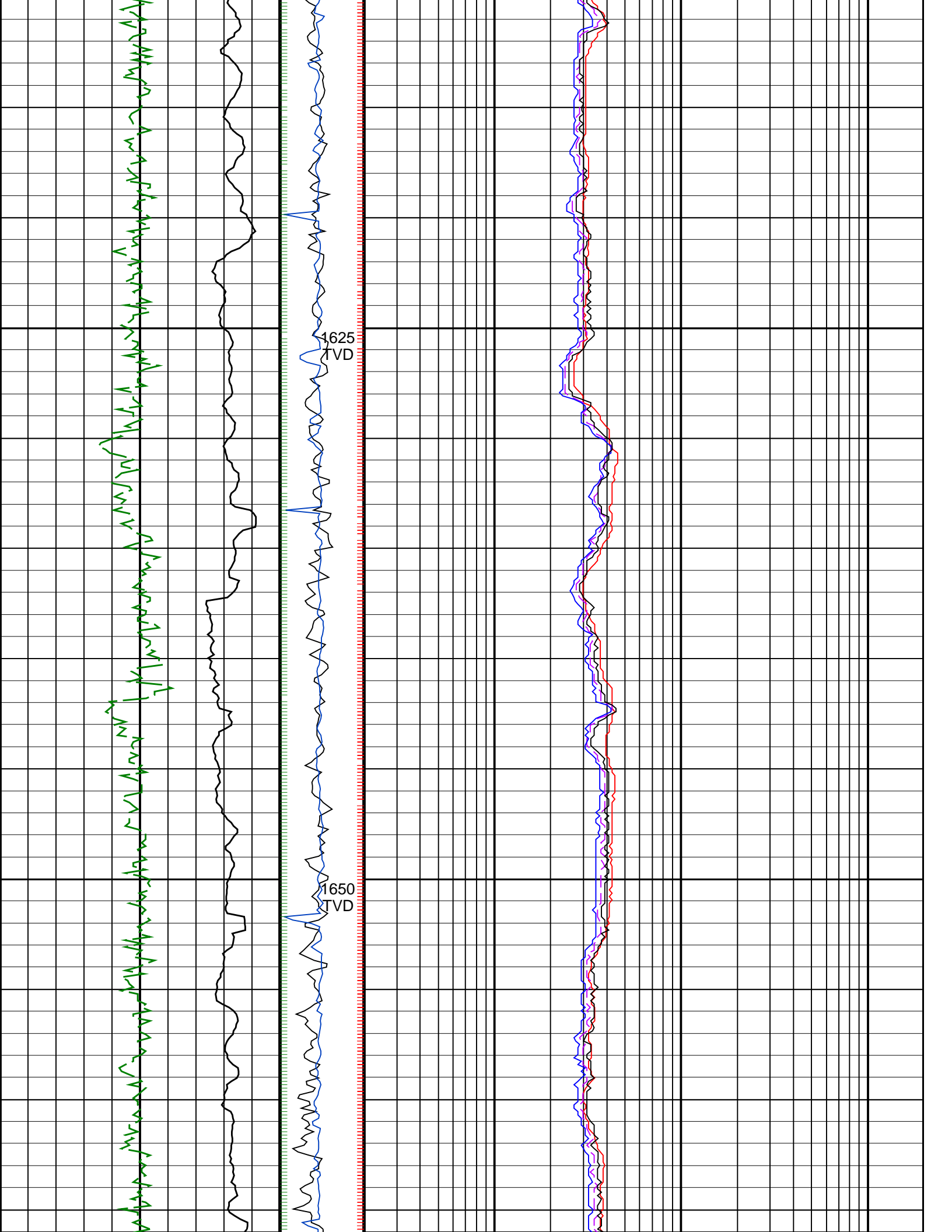
PIP SUMMARY

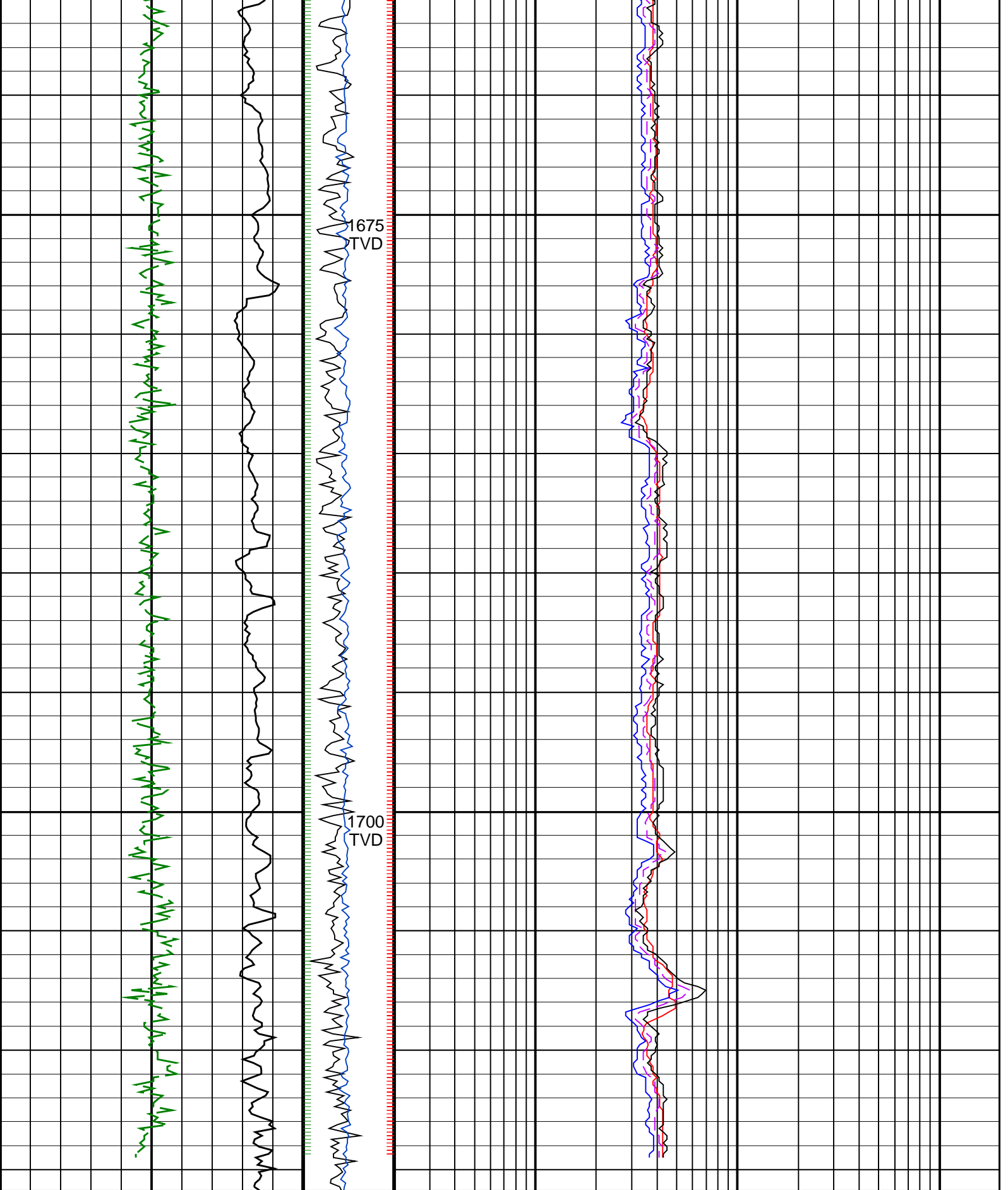
- ┆ ARC Gamma Ray Samples
- ┆ ARC Resistivity Samples
- ┆ IMP RP28 PIP

		ARC BHCorr Phase-Shift Resistivity 40-in. at 2 MHz, Real-Time (P40H_RT)	0.2	(OHMM)	200
		ARC BHCorr Phase-Shift Resistivity 16-in. at 2 MHz, Real-Time (P16H_RT)	0.2	(OHMM)	200
ARC Gamma Ray, Real-Time (ARC_GR_RT) (GAPI)	MWD Collar RPM (CRPM_RT) (RPM)	ARC BHCorr Phase-Shift Resistivity 28-in. at 2 MHz, Real-Time (P28H_RT)	0.2	(OHMM)	200
ROP*5 (ROP5) (M/HR)	PKPK RPM (Stick_RT) (RPM)	ARC BHCorr Attenuation Resistivity 40-in. at 2 MHz, Real-Time (A40H_RT)	0.2	(OHMM)	200









ROP*5 (ROP5) (M/HR)	PKPK RPM (Stick_RT) (RPM)	ARC BHCORR Attenuation Resistivity 40-in. at 2 MHz, Real-Time (A40H_RT) (OHMM)
200	0	0.2
0	500	200

Green Gamma Ray, Real-Time (ARC_GR_RT)	MWD Collar RPM (CRPM_RT)	ARC BHCORR Phase-Shift Resistivity 28-in. at 2 MHz, Real-Time (P28H_RT) (OHMM)
0.2	0.2	200
0.2	0.2	200

0	(GAPI)	200	(RPM)	0.2	(OHMM)	200
		0	250			
				ARC BHCorr Phase-Shift Resistivity 16-in. at 2 MHz, Real-Time (P16H_RT)		
		0.2		(OHMM)		200
				ARC BHCorr Phase-Shift Resistivity 40-in. at 2 MHz, Real-Time (P40H_RT)		
		0.2		(OHMM)		200
PIP SUMMARY						
		<ul style="list-style-type: none"> + ARC Gamma Ray Samples + ARC Resistivity Samples + IMP RP28 PIP 				